

How to get to Melton Hospital

Melton Mowbray Hospital is a local community hospital situated on the eastern side of Melton Mowbray town centre.

The hospital is wheelchair friendly with all patient areas situated on the ground floor.

The hospital offers patient centred care, working in partnership with yourself and other disciplines, to provide treatment, care and emotional support of a high standard.

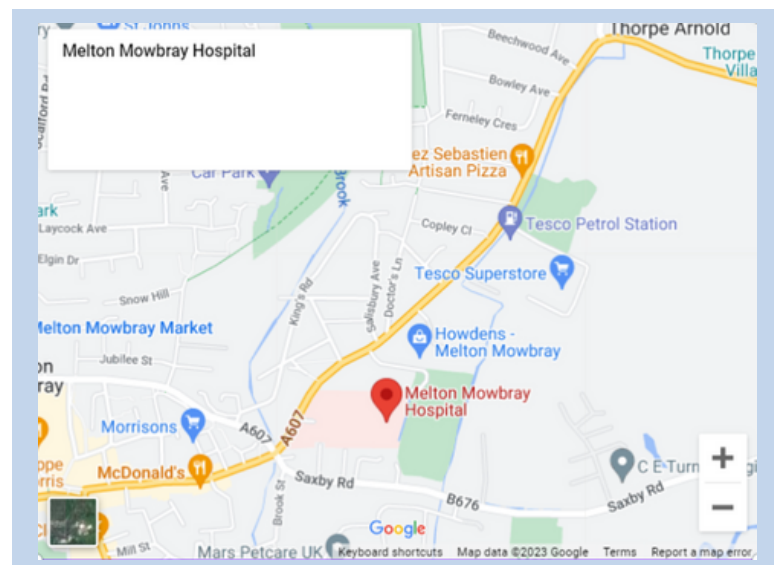
The building is accessible to people with disabilities. Please let us know before your appointment if you need disabled access so that we can make sure your appointment takes place in the most appropriate room.

Our details

Melton Mowbray Hospital
Thorpe Road, Melton Mowbray
Leicestershire
LE13 1SJ

Tel: 0116 295 2992 / 2900

(Please note this is CAMHS Outpatients number).



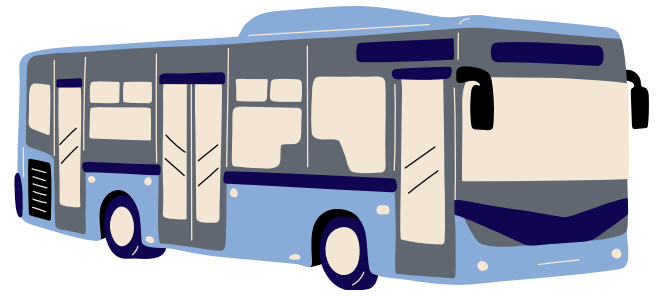
How to get to us

How to get to CAMHS on public transport:

For full up-to-date information, please ring Traveline on 0871 200 2233 or visit <https://www.traveline.info/>

Parking at CAMHS:

Free but limited on-site car parking is available located directly in front and at the side of the building. Disabled parking is also available.



Families who are in receipt of benefits may be eligible for reimbursement of bus fares. Please request a refund claim form from reception.

Important additional information for CAMHS patients

We welcome your feedback

We would like you to think about your experience of our service. We would appreciate it if you could take a few minutes to scan the QR code on the right or [click here](#) to take a short survey. By answering the questions, it will help us to understand your overall experience. This will help us to measure and improve the quality of care we give at Leicestershire Partnership NHS Trust. All of your answers are anonymous.



Appointments

If you cannot attend your appointment, please contact CAMHS as soon as possible on the contact number on your letter to discuss this. We will do our best to understand what is making this hard and find a way to help you to attend. Any appointments that you miss slow the process down, potentially delaying your treatment. Also, another young person who needs help could have had your appointment so if you can't attend your appointment (which is okay – sometimes things happen), please let us know as soon as possible by contacting the number on your appointment letter so we can reschedule your appointment and offer your cancelled appointment to another young person. If you miss multiple appointments without contacting us, we will close your case and remove you from CAMHS care so it's really important to keep in contact with us.

Smoke Free

Please remember that Leicestershire Partnership NHS Trust is a "smoke free" organisation. What that means is that when you attend for your appointment, you **will not be allowed to smoke in Trust buildings OR grounds**. In addition, the Trust has a commitment to supporting those who wish to reduce or stop smoking, through the provisions of Nicotine Replacement Therapy, as well as advice and guidance. If you would value the Trust help on this matter please ring 0116 295 4141, alternatively for a range of online support you can visit www.quitready.co.uk

Support services

Health for Teens is an online platform that provides a diverse range of content and quizzes on various health-related topics. From sexual health to growing up, lifestyle and beyond. Our team of medical professionals including doctors, psychologists, nurses and other clinicians from CAMHS constantly create fresh content for the site. Additionally, we have a dedicated CAMHS area that provides information about our specialised teams. To visit our dedicated CAMHS area, please scan the bar code on the right or [click here](#).

