

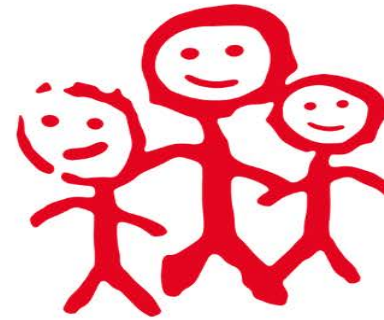
Trust Board 29.11.2022

Colin Cross Service Group Manager



Leicestershire Partnership
NHS Trust

Healthy Together



'creating high quality, compassionate care and wellbeing for all'

Content

- Our children and young people population - LLR
 - A national policy driver -Best Start for Life
 - Developing Family Hubs – Leicester City
 - Leicestershire and Rutland contract – programme achievements
 - 0-11 Healthy Together offer – Leicestershire and Rutland
 - Safe transfer of care to new 11 plus Local Authority offer - Leicestershire and Rutland
 - Healthy Together One Number
 - Exploring a Section 75 agreement– A partnership with Leicester City Council
 - Performance - Healthy Child Contacts – LLR
 - Recovery using Indices of Multiple Deprivation (IMD)
 - Meeting our challenges through Quality Improvement
- 

Our children and young people population in Leicester, Leicestershire and Rutland

Leicester City 0-19 children and young people = **97,413**

Leicestershire 0-11 children = **85,271**

Rutland resident 0-11 children = **3,946**

Proportionate universalism is the resourcing and delivering of universal services at a scale and intensity proportionate to the degree of need. Across LLR in Oct 2022 there were:

- 4434 CYP with identified episodes of care (Universal Plus)
- 637 CYP where Healthy Together are working alongside partners to deliver care (UPP- active)
- 1266 safeguarding cases (antenatal safeguarding, Section 17 and 47 child protection, Looked After Children)

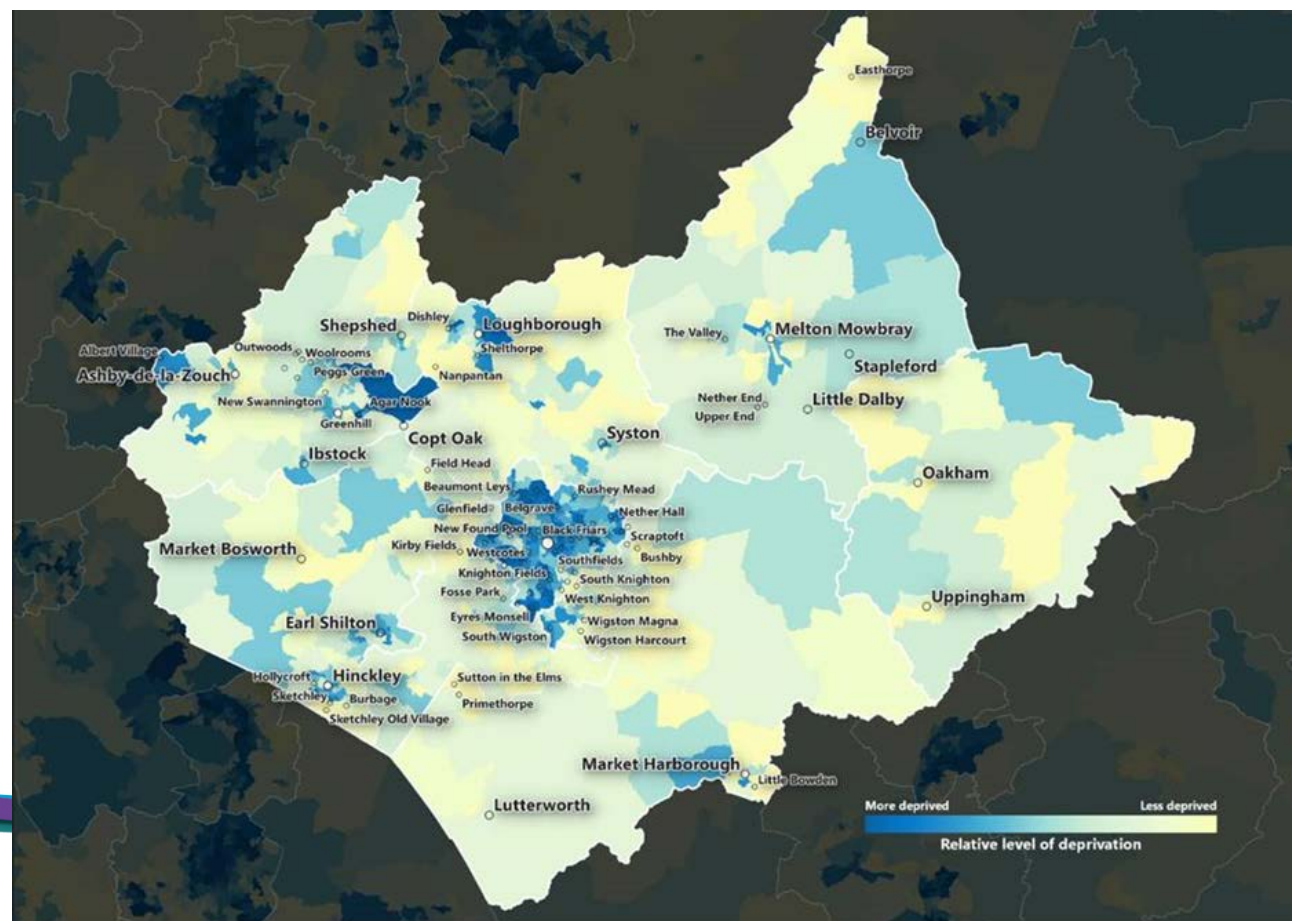


Fig.1 - Indices of Multiple Deprivation (IMD) Leicester, Leicestershire and Rutland (2019)

A national policy driver - Best Start for Life

Six priority areas for Best Start for Life:	Healthy Together response
Seamless support for families	Healthy Together One Number
A welcoming hub for families	Neighbourhood clinic model using children's centres, libraries, community halls, GP's
The information families need when they need it	Health4 websites, virtual clinics, group work
An empowered Start for Life workforce	Healthy Together People plan
Continually improving the Start for Life offer	Embedding of Quality Improvement across service, exploration of Section 75 (Leicester City)
Leadership for change	Representation of all three LA Family Hub working groups



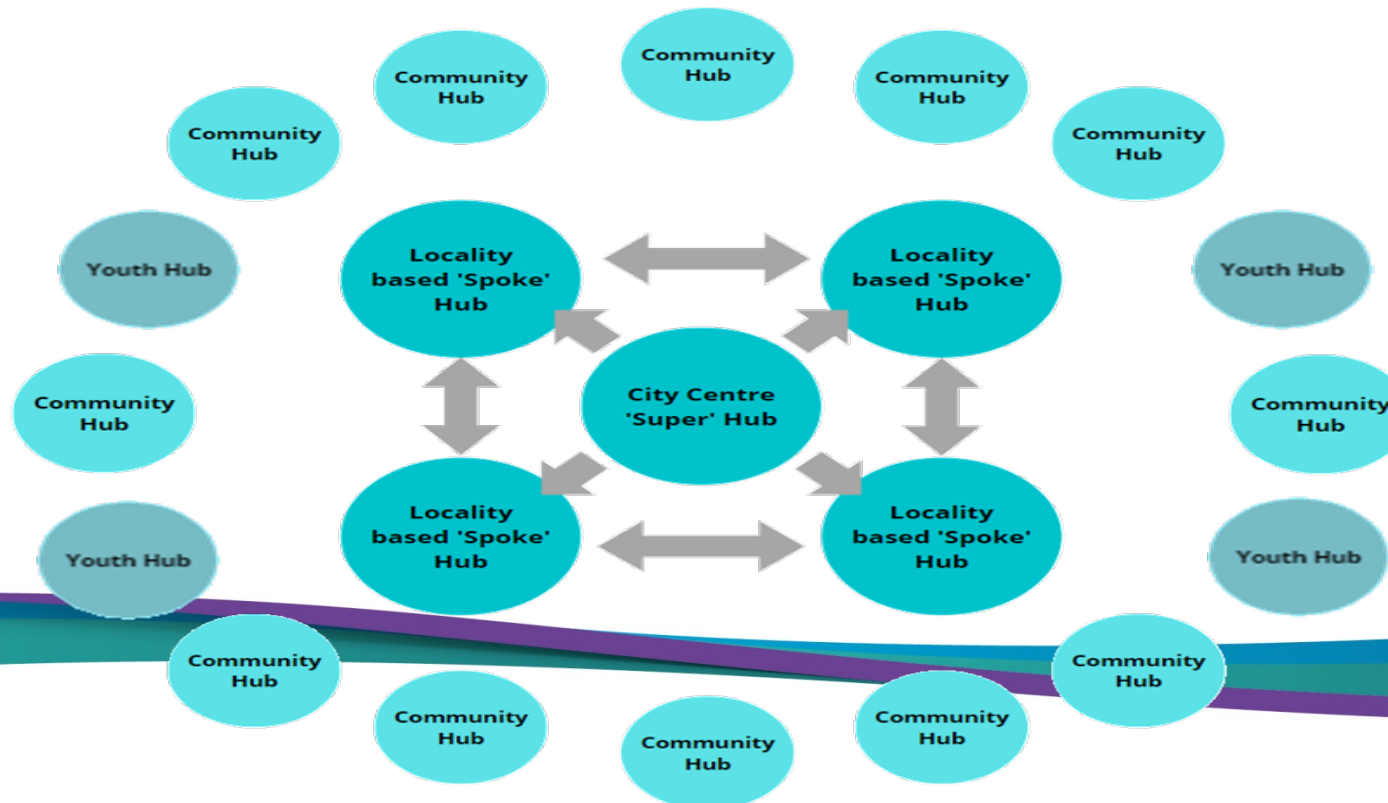
Developing Family Hubs – Leicester City

2 April 2022
Announcement of the names of the 75 eligible LAs

Summer 2022
Publication of final programme guide

Summer-Autumn 2022
Rolling window for LA sign up

Summer-Autumn 2022 onwards
Delivery



Leicestershire and Rutland contract – programme achievements

Dec 2021

Tender live for 0-11 and 11+ contracts



Jan 2022

Bid submission



May 2022

Management of change (11+ school nursing staff)



May-August 2022

Demobilisation of 11+ offer



May-present

Mobilisation of 0-11 contract



Healthy Together awarded 0-11 contract

April 2022



0-11 Healthy Together offer from September 2022



Antenatal

Our aim will be to offer all expecting parents a one hour antenatal appointment with a health visitor between 28 and 36 weeks.

This is a key change as we currently only offer appointments to first time or vulnerable parents.



First six months

We will visit mother and baby within the first 10-14 days of them being born.

A six to eight week check will take place with a health visitor or healthy child programme nurse, usually within a clinic.

At 3-4 months parents may be sent digital resources, unless a review is needed.



10-12 month and two year checks

A face to face development review will take place reviewing the key areas of development.

A similar review will take place at 2 years in a clinic.



Integrated reviews at two years

Parents of pre-school children with an identified vulnerability will be offered a face-to-face integrated review, involving their child's nursery or care provider, at age two to two and a half.



Review at three years

Parents of three to three and a half year olds will be given a questionnaire, to review key areas of development. The responses will be assessed and support offered will be based on the needs identified. This may be signposting to digital resources, group contacts or a face to face review.



Five to 11 offer in primary schools

Parents reception aged children will receive a health questionnaire (during the spring) and children in year six will have the opportunity to complete a health and wellbeing questionnaire in school (during the first term).

The primary school NCMP programme will take place between Jan - Feb.

Safe transfer of care to new 11 plus Local Authority offer - Leicestershire and Rutland

Safe Transfer of care to new 11 plus provider

- De-mobilisation plan
- Quality Impact Assessment
- Partnership meetings with LPT, LA's and ICB
- Oversight from FYPCLD Lead Nursing Team
- Development of safe transfer of care method (Traffic light system)
- Caseload meetings with Early Help
- New Information Sharing Agreement
- Letter to affected parents, children and young people
- Safe Handover timeline

Staff support

- Staff briefing sessions April - May 2022
- Transfer of Undertakings (Protection of Employment) regulations (TUPE) not applied
- Management of Change commenced in May for 37 affected clinical staff
- Each affected member of staff received two 1:1 meetings with a manager and HR rep
- All staff offered alternative roles within Healthy Together
- Staff reported satisfactory experience of Management of Change and outcome

Healthy Together One Number

Offer

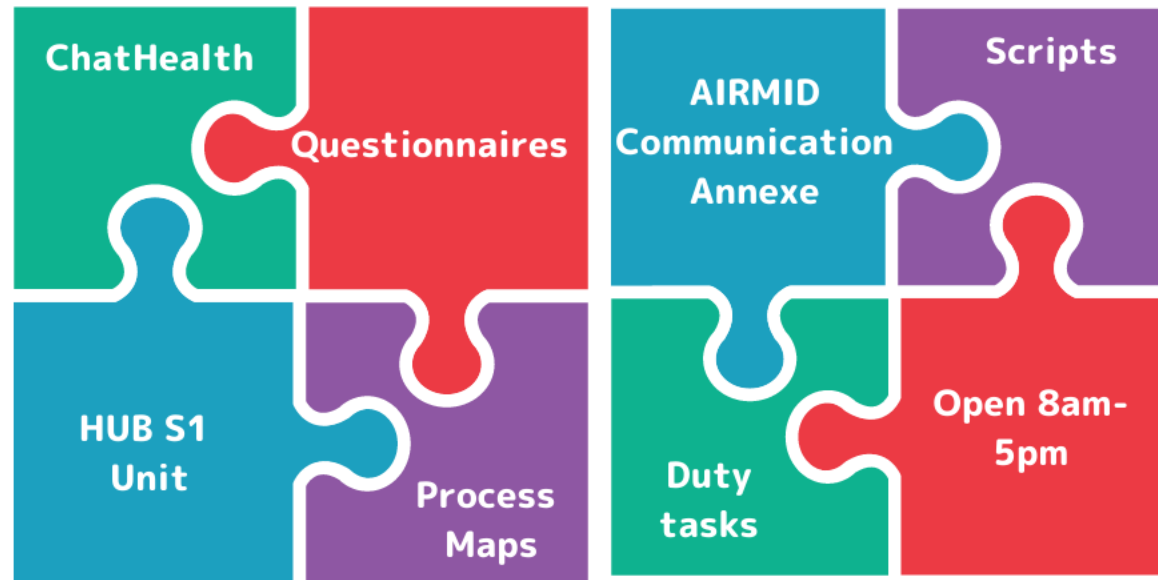
A central place for people to gain timely support including:

- Advice for parents
- Advice for young people
- Help arranging appointments

Working with

- Social workers and social care
- Early years settings
- GPs
- Education
- Children and family centre teams

Healthy Together One Number



Staffed by

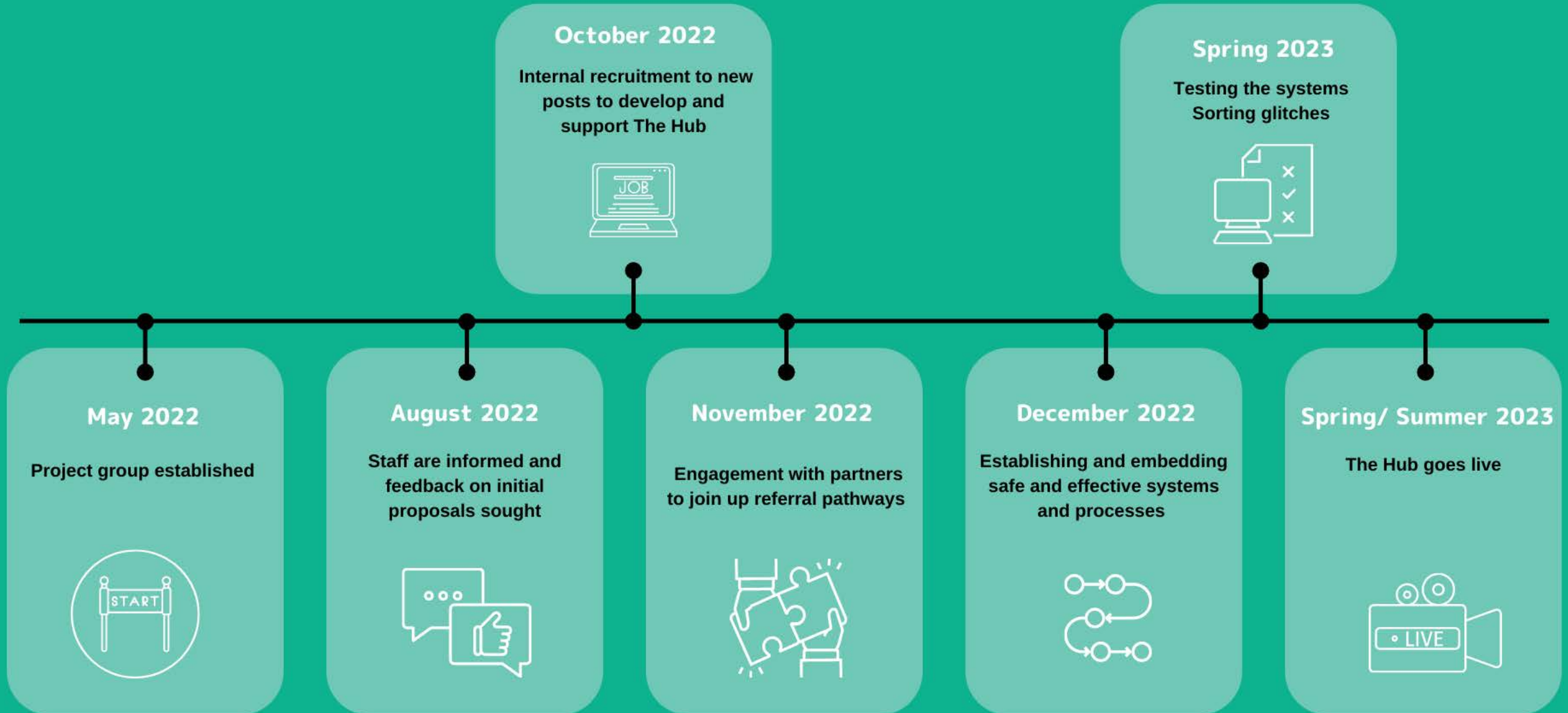
- Public Health Nurses
- Healthy Child Programme Practitioners
- Healthy Child Programme Nurses
- Admin colleagues

Benefits

- Human contact
- No face-to-face clinical work
- Phone and text based
- Permanent roles
- Help create innovative ways of working

Leicester City 0-19, Leicestershire and Rutland 0-11

Healthy Together One Number Implementation Timeline



Exploring a Section 75 agreement - a partnership with Leicester City Council

11 Nov 2022

LPT and LCC conclude draft specification

9 Dec 2022

Meeting with LPT head of equality, diversity and inclusion to review Due Regard and Equality Quality Impact Assessment (EQIA)

16 Jan-6 Apr 2023

Joint LPT and LCC public consultation

March-June 2023

Conclusion of public consultation, agree final specification

1 Oct 2023

New contract begins (7 years)

LPT strategic executive board – completed spec

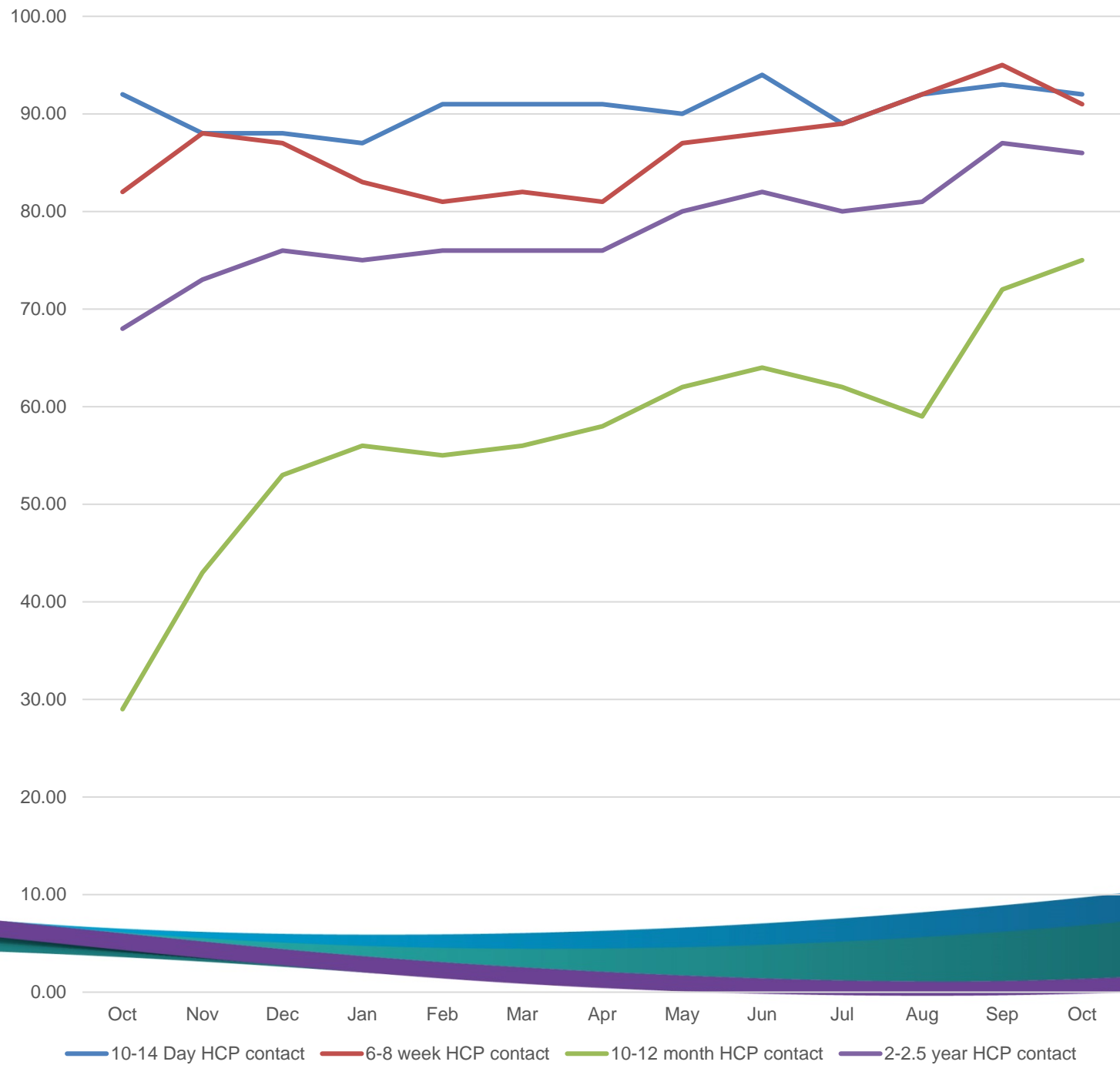
6 Jan 2023

Mobilisation of new offer

July-Sept 2023

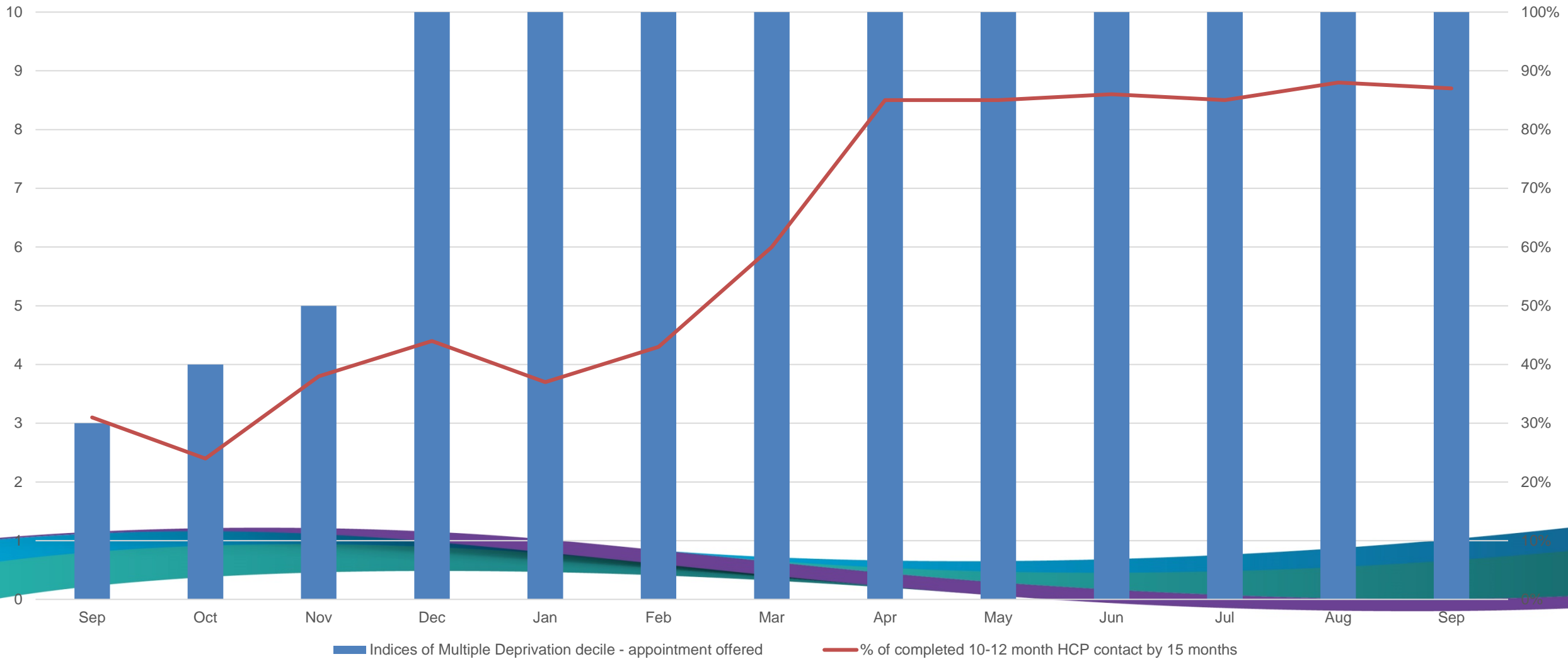
Performance - Healthy Child Programme

Contacts Oct 2021- Oct
2022 – LLR - % eligible
cohort



Recovery using Indices of Multiple Deprivation (IMD)

Titration of 10-12 month Healthy Child Programme development reviews using Indices of Multiple Deprivation –
Leicester City – Sept 2021 – Sept 2022



Meeting our challenges through Quality Improvement



Enhanced recruitment process -
Healthy Together preceptorship
programme



National Child Measurement
Programme Practice Review



Improving Friends and
Family Test responses



Revised Caseload model
Area 3 – Leicester City



Enhanced Care
Navigation offer



Safeguarding Supervision
quality review



Healthy Together
homelessness pathway



Healthy Together Staffnet
page improvement



Embedding learning
from serious incidents



Improvement in clinic attendance
– Area 4 – Leicester City



Enhancing communication
with social care

Questions?

